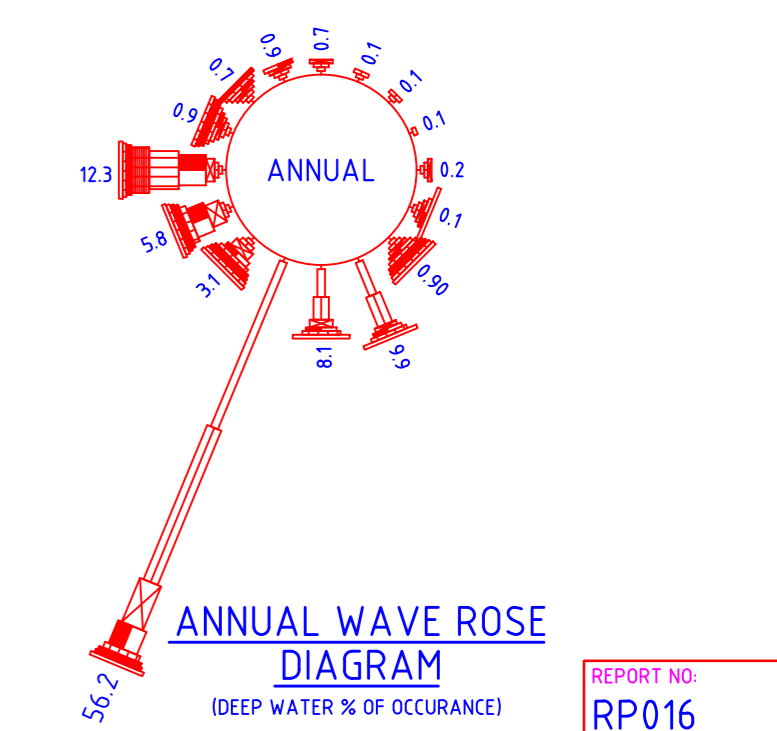
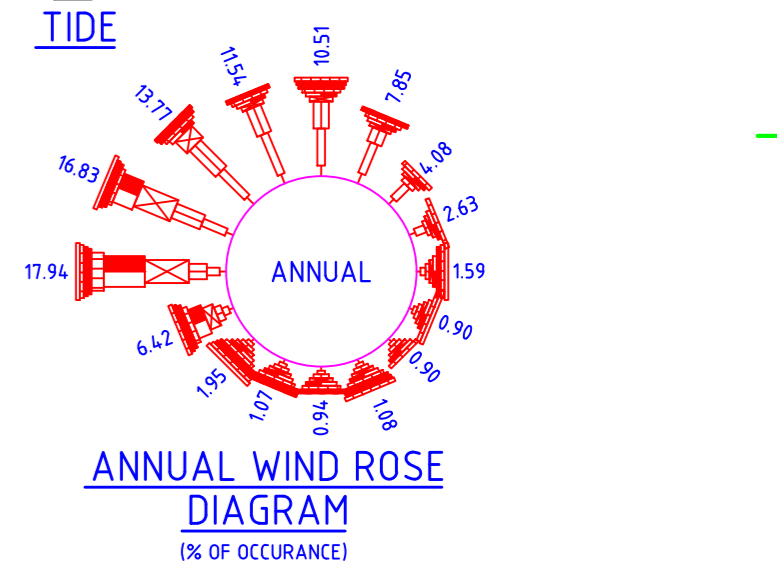
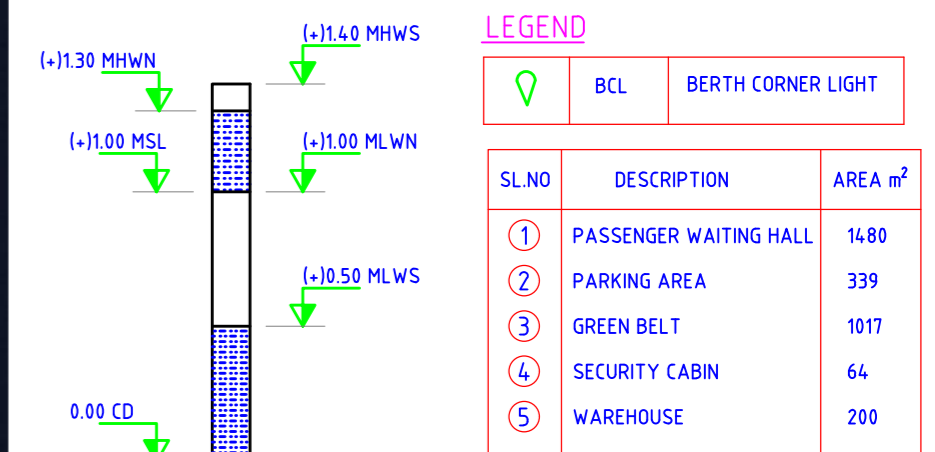


**KEY PLAN**  
SCALE: 1:120000



**NOTES:**  
1. ALL DIMENSIONS ARE IN METRES.  
2. ALL LEVELS ARE IN METRES AND ARE WITH RESPECT TO CHART DATUM (CD).  
3. ALL COORDINATES ARE GIVEN IN METRES REFERRED TO UNIVERSAL TRANSVERSE MERCATOR (UTM) PROJECTION, SPHEROID (WGS 1984), ZONE 43.

REV.	DDMMYY	DATE	STATUS	DESCRIPTION	DES.	DRN.	INIT.	SIGN.	INIT.	SIGN.
B	28 08 23	4	FIRST SUBMISSION		ASA	AST	ASA	PRJ		
<b>REVISIONS</b>										
STATUS CODES 1: PRELIMINARY 2: FOR APPROVAL 3: GOOD FOR CONSTRUCTION 4: FOR REPORT										
DRAWING NO.		TITLE			REVISIONS					
		REFERENCE DRAWINGS								

**CLIENT:** COCHIN PORT AUTHORITY

**PROJECT:** PORT LED DEVELOPMENT WORKS AND ALLIED FACILITIES, LAKSHADWEEP

**TITLE:** KADMATH-EASTERN JETTY DEVELOPMENT PLAN

**PROJECT NO:** C1221104

**COP:** -

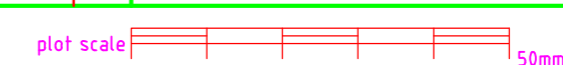
**SCALE:** 1:9000

**DRAWING NO:** FD0801

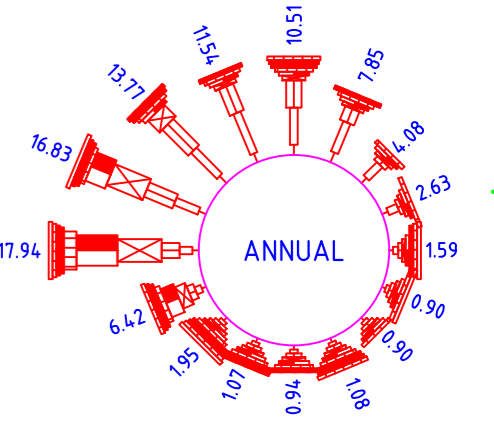
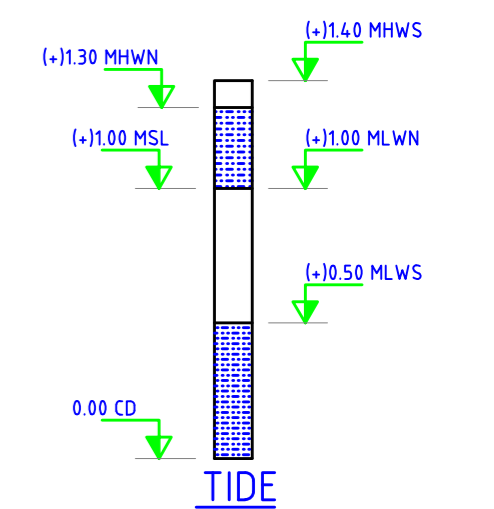
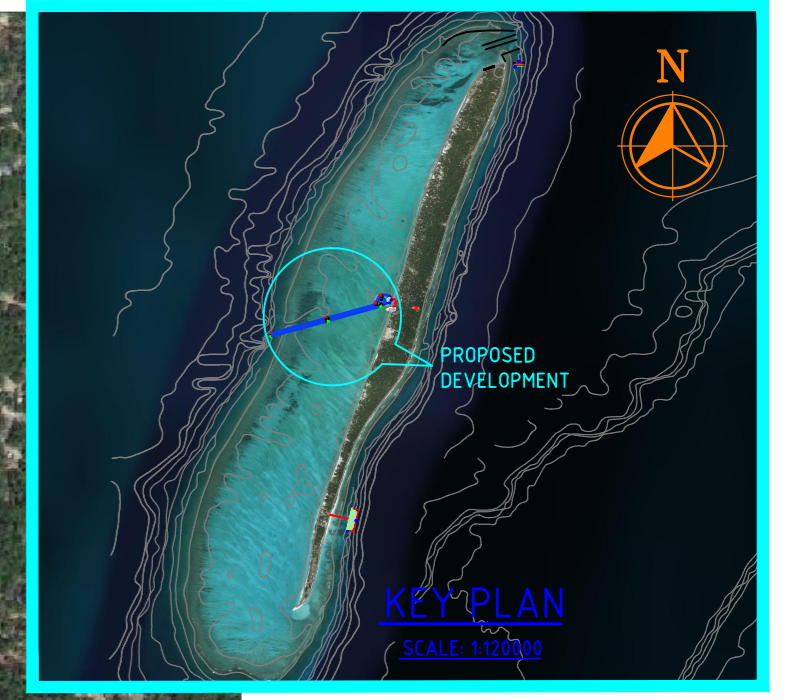
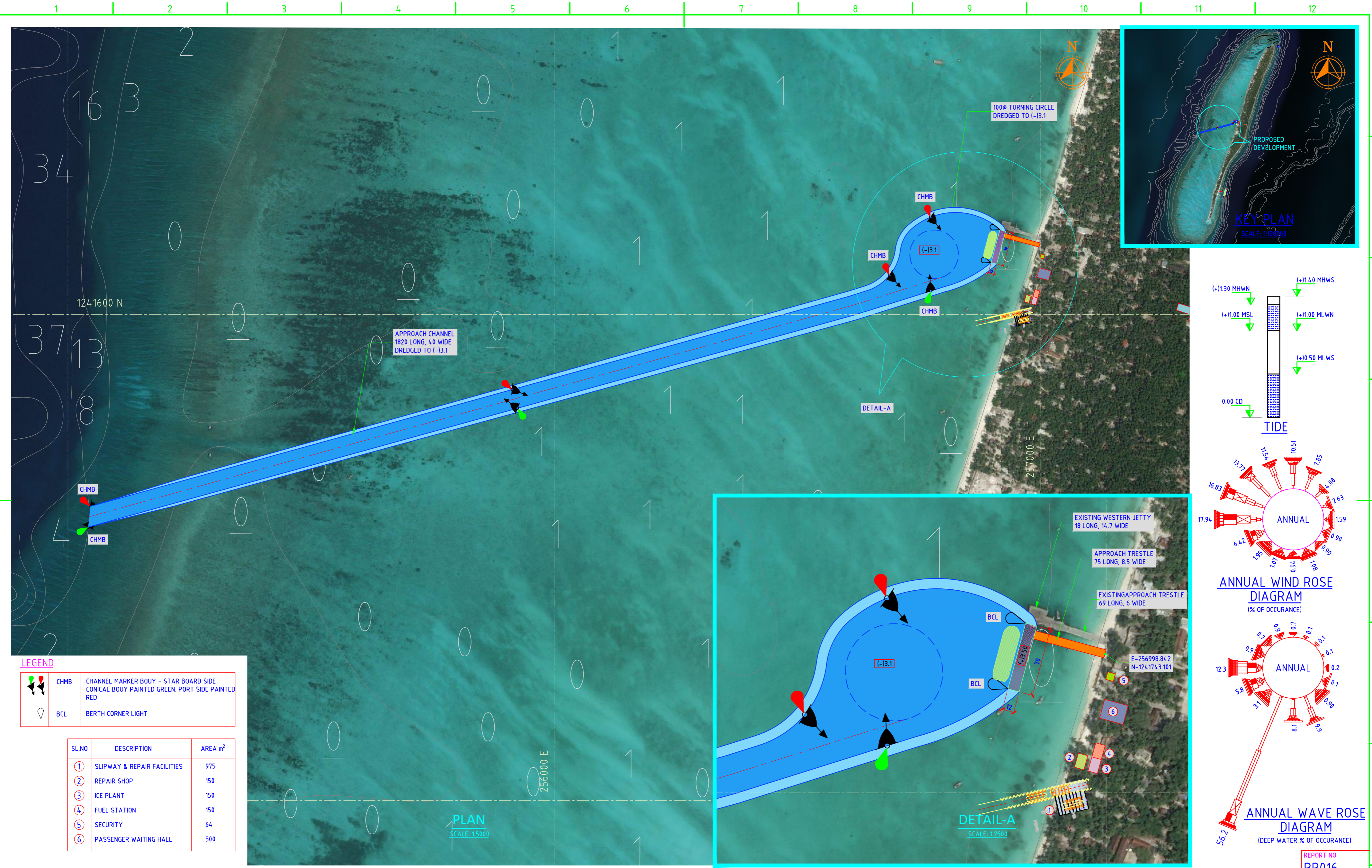
**REV:** B

**REPORT NO:** RP016

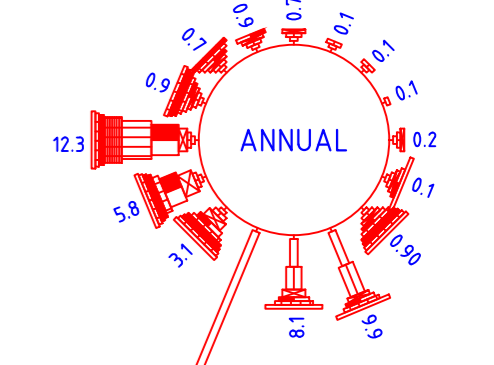
**L&T Infra Engineering** **L&T Infrastructure Engineering Ltd.**



AUTO PATH: L:\PORTS\2022\1221104 - RP - DPL OF JETTIES-LDP\WORKING DRAWINGS\DRP\_RP016\_BB\_KADMATH\_FINAL\KADMATH-EASTERN JETTY-DEVELOPMENT PLANNING



ANNUAL WIND ROSE DIAGRAM (% OF OCCURRENCE)



ANNUAL WAVE ROSE DIAGRAM (DEEP WATER % OF OCCURRENCE)

REPORT NO: RP016

**LEGEND**

	CHMB	CHANNEL MARKER BOUY - STAR BOARD SIDE CONICAL BOUY PAINTED GREEN, PORT SIDE PAINTED RED
	BCL	BERTH CORNER LIGHT

SL.NO	DESCRIPTION	AREA m <sup>2</sup>
1	SLIPWAY & REPAIR FACILITIES	975
2	REPAIR SHOP	150
3	ICE PLANT	150
4	FUEL STATION	150
5	SECURITY	64
6	PASSENGER WAITING HALL	500

**NOTES:**  
 1. ALL DIMENSIONS ARE IN METRES.  
 2. ALL LEVELS ARE IN METRES AND ARE WITH RESPECT TO CHART DATUM (CD).  
 ALL COORDINATES ARE GIVEN IN METRES REFERRED TO UNIVERSAL TRANSVERSE MERCATOR (UTM) PROJECTION, SPHEROID (WGS 1984), ZONE 43.

DRAWING NO.	TITLE	REV.	DDMMYY DATE	STATUS	DESCRIPTION	DES.	DRN.	INIT. CHECKED	SIGN. APPROVED
		B	28 08 23	4	FIRST SUBMISSION	ASA	AST	ASA	PRJ

**REVISIONS**

STATUS CODES 1: PRELIMINARY 2: FOR APPROVAL 3: GOOD FOR CONSTRUCTION 4: FOR REPORT

CLIENT: COCHIN PORT AUTHORITY

PROJECT: PORT LED DEVELOPMENT WORKS AND ALLIED FACILITIES, LAKSHADWEEP

TITLE: KADMATH-WESTERN JETTY DEVELOPMENT PLAN (Sheet 1 of 2)

PROJECT NO: C1221104

COP: -

SCALE: AS SHOWN

DRAWING NO: FD0802

REV: B

**L&T Infra Engineering**

**L&T Infrastructure Engineering Ltd.**



AUTO PATH C:\P015\1221104\1221104 - RP - DWP OF JETTIES - DWP WORKING DRAWINGS\DR - RP016 - RB - KADMATH - FINAL\0802-RB-AST-KADMATH-WESTERN JETTY-DEVELOPMENT PLAN (SHEET 1 OF 2).DWG