

- MAIN PARTICULARS**
- LENGTH OVERALL - 32.00 m
 - BREADTH (MOULDED) - 10.65 m
 - DEPTH (MLD) fr BASELINE - 4.74 m
 - DRAFT HULL (MAX) - 5.3 m
 - FRAME SPACING - 500 mm
 - CLASS - 5S SUL TUG INDIAN COASTAL SERVICE 5IY
 - COMPLEMENT - 19
 - BOLLARD FULL - 45 T
 - SPEED - 12 KNOTS
 - ENGINES - WARTSILA 9L20 rated 1800 KW @ 1000 rpm
 - VOITH PROPELLER - MODEL 28R5 /210-2

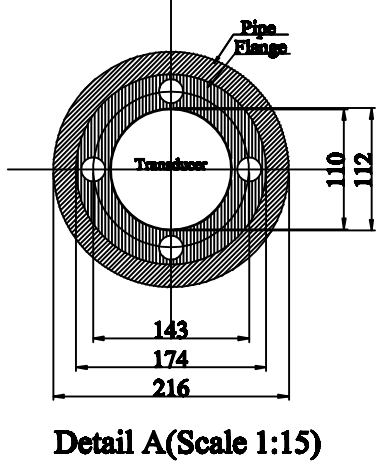
CLASS NOTATION AND FLAG	CLASS ID No	RULE BOOK IN ACTION
	CLASS NOTATION	5S SUL TUG INDIAN COASTAL SERVICE 5IY
	AUTHORITY	IRS
	FLAG	INDIAN

s.l.no.	Frame no.	Distance from ship C.L. to block C.L.	Height above ground level	Keel height from B.L.
1	5	0	1000	2985
2	7	0	1000	2645
3	9	0	1000	2487
4	11	0	1000	2396
5	13	0	1000	2321

s.l.no.	Frame no.	Distance from ship C.L. to block C.L.	Height above ground level	Keel height from B.L.
1	6	0	1000	2777
2	8	0	1000	2552
3	10	0	1000	2437
4	12	0	1000	2359

s.l.no.	Frame no.	Distance from ship C.L. to block C.L.	Height above ground level	Keel height from B.L.
1	40	0	1000	2335
2	42	0	1000	2375
3	44	0	1000	2415
4	46	0	1000	2455

s.l.no.	Frame no.	Distance from ship C.L. to block C.L.	Height above ground level	Keel height from B.L.
1	41	0	1000	2355
2	43	0	1000	2395
3	45	0	1000	2435
4	47	0	1000	2475



s.l.no.	Frame no.	Distance from ship C.L. to block C.L.	Height at C.L. of block above ground level	Height (X)	Height (Y)	Keel height from B.L.
1	19	2000	3450	3530	3371	2134
2	20	2000	3431	3508	3349	2114
3	21	2000	3409	3487	3329	2094
4	22	2000	3394	3472	3315	2079
5	23	2000	3379	3457	3301	2067
6	24	2000	3368	3445	3290	2058
7	29	1000	3228	3290	3165	2104
8	30	1000	3243	3302	3183	2137
9	31	1000	3260	3316	3204	2150
10	32	1000	3280	3333	3227	2173
11	33	1000	3300	3353	3247	2195
12	34	1000	3320	3373	3267	2215
13	40	2500	1216	1269	1163	2335
14	41	2500	1216	1269	1163	2355
15	45	2500	1216	1269	1163	2435
16	46	2500	1216	1269	1163	2455
17	55	1000	3890	4091	3769	2709
18	56	1000	4166	4454	3970	2831
19	57	1000	4567	4971	4262	3039
20	58	1000	5132	5659	4712	3379

Frame no.	A	B	C	D	E	F	G	H	I
19	3537	3530	3523	3458	3450	3444	3378	3371	3364
21	3493	3487	3483	3415	3409	3405	3335	3329	3325
23	3462	3457	3453	3384	3379	3376	3305	3301	3298

Frame no.	A	B	C	D	E	F	G	H	I
20	3514	3508	3502	3437	3431	3424	3355	3349	3343
22	3477	3472	3468	3399	3394	3390	3319	3315	3311
24	3448	3445	3442	3371	3368	3365	3293	3290	3287

Frame no.	A	B	C	D	E	F	G	H	I
29	3287	3290	3293	3224	3228	3232	3160	3165	3170
31	3312	3316	3321	3254	3260	3266	3197	3204	3211
33	3347	3353	3359	3294	3300	3306	3241	3247	3253

Frame no.	A	B	C	D	E	F	G	H	I
30	3298	3302	3306	3238	3243	3248	3177	3183	3189
32	3327	3333	3339	3274	3280	3286	3220	3227	3233
34	3367	3373	3379	3314	3320	3326	3261	3267	3273

Frame no.	A	B	C	D	E	F	G	H	I
40	3646	3652	3658	3593	3599	3605	3540	3546	3552
46	3766	3772	3778	3713	3719	3725	3660	3666	3672

Frame no.	A	B	C	D	E	F	G	H	I
41	3666	3672	3678	3613	3619	3625	3560	3566	3572
45	3746	3752	3758	3693	3699	3705	3640	3646	3652

Frame no.	A	B	C	D	E	F	G	H	I
55	4008	4091	4186	3834	3890	3958	3734	3771	3819
57	4790	4971	5178	4430	4567	4720	4160	4262	4379

Frame no.	A	B	C	D	E	F	G	H	I
56	4330	4454	4591	4069	4166	4273	3901	3970	4046
58	5454	5661	5868	4942	5128	5328	4559	4712	4877

- FIRST DOCKING
- ALTERNATE DOCKING
- X - OUTER DIMENSION OF BLOCK.
- Y - INNER DIMENSION OF BLOCK.
- G.L. - GROUND LEVEL.
- B.L. - BASE LINE

TOTAL NO OF BLOCKS - 29
LOAD AT DOCKING CONDITION - 542.48 t
LOAD ON EACH BLOCK - (542.8/29) = 18.7 t (APPROXIMATE)

W	2010-06-09	BLOCK CO-ORDINATES MODIFIED AS PER LINES PLAN	SIDOU	REN	MRS
R	26.02.2007	IRS NOTED FOR INFORMATION VIDE DATED 25.04.2007.	ROSHV	C.P.K	V.P.K
REV	DATE	DESCRIPTION	Prepared By	Checked By	Approved By
CLIENT: COCHIN PORT TRUST		TITLE: DOCKING PLAN			
YARD NO:	125	TO	126		
TEBMA Shipyard's Ltd		III Floor, Khairat Center 149, Maraduthi Road, Puzhassery, Thiruvananthapuram, Kerala, India. Phone: +91 44 28 53 30 40 Fax: +91 44 28 53 30 35 Home Page: www.tebma.com			
SCALE	1:125	A1	125	100	12
YARD NO.	125	Gr. NO.	100	SEC. NO.	12
This drawing/specification is the property of TEBMA Shipyard's Ltd. and must not be copied or the contents thereof or any information received in conjunction therewith must be imparted to any unauthorised third party. The receipt of the drawing / specification implies that the conditions mentioned herein are accepted.					