

C17

ontd.

Near Kannanghatt Bridge

Item	Qty.
Panel Board	1 No.
125 A , 4 Pole MCCB	1 No.
32 A , 3 Pole MCB	2 Nos.
16 A , 3 Pole MCB	2 Nos.
40 A DP MCB	1 No.
DOL Starter, 3 Phase, 5 HP	2 Nos.
DOL Starter, 3 Phase, 1 HP	2 Nos.
3 Phase Heavy Duty Capacitor, 2 KVAR	2 Nos.

Item	Qty.
8 Way SPN DB	1 No.
40 A , DP RCCB, 30 mA	1 No.
16 A, SP MCB	2 Nos.
10 A, SP MCB	2 Nos.
6 Module PVC Box with 1 no. 6A Socket & 4 nos. 6 A Switches incl. Plate	1 No.
5 in 1 Switch & Socket , 16 A inci. Box & Plate	1 No.
LED Batten	2 Nos.

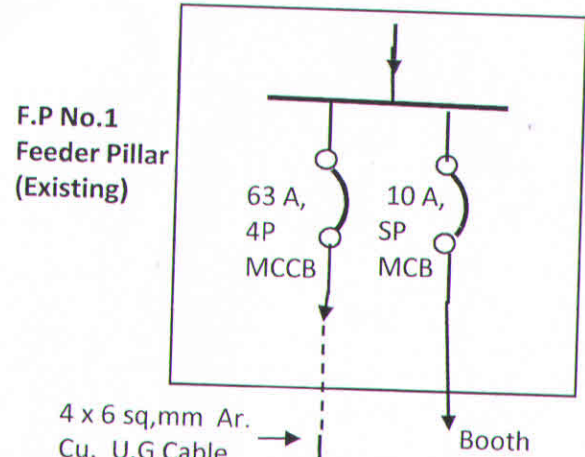
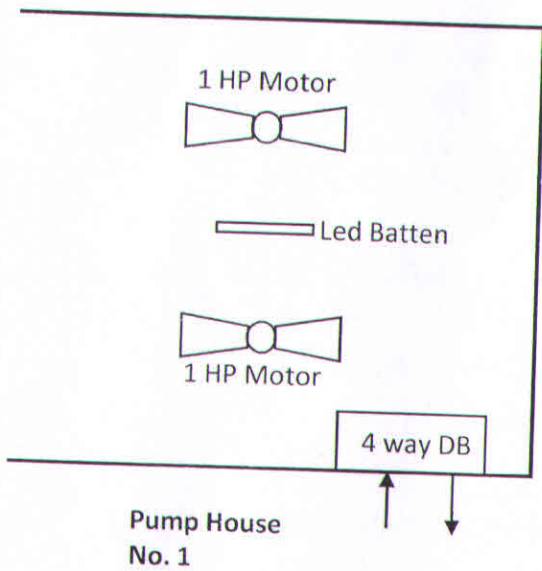
C18

Cabling Details:

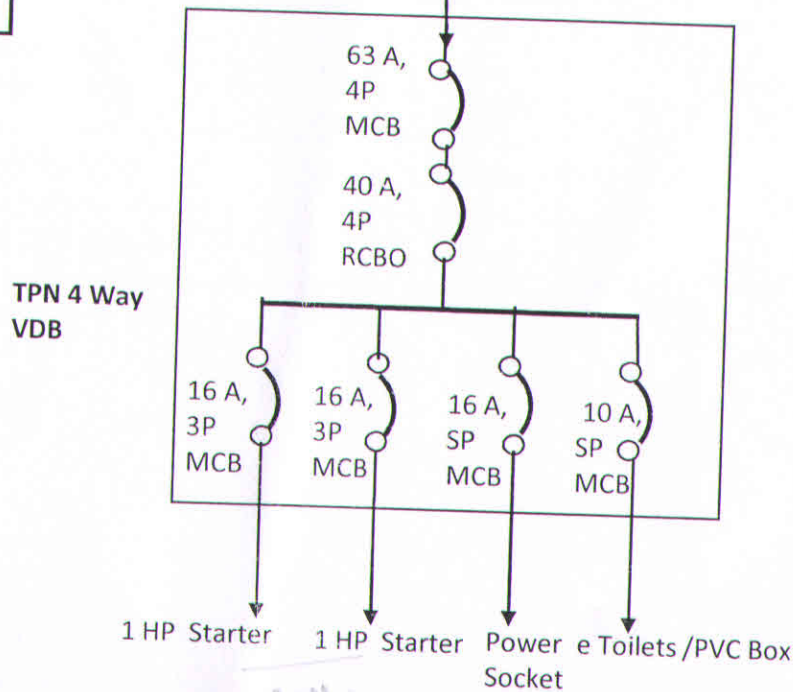
Item	Near B.O.T Bridge	Near Pedastrian Bridge	Near Kannanghatt Bridge	Total Qty.
4 x 16 Sq.mm Armoured Copper Cable			180 mtr. U.G laying	180 mtr.
4 x 10 Sq.mm Armoured Copper Cable		65 mtr. U.G laying		65 mtr.
4 x 6 Sq.mm Armoured Copper Cable	20 mtr. U.G laying			20 mtr.
4 x 4 Sq.mm Armoured Copper Cable	40 mtr. U.G laying (20 mtr.+ 20 mtr.) for Toilets & Booth	45 mtr. (20 mtr U.G laying + 25 mtr. Clamping) for Dome Lights in the Bridge	30 mtr. U.G laying for Toilets	115 mtr.
4 x 2.5 sq.mm Flexible Copper Cable		18 mtr. (Clamping inside Pump Hose)	20 mtr (Clamping inside Pump Hose)	38 mtr.
4 x 1.5 sq.mm Flexible Copper Cable	15 mtr (Clamping inside Pump Hose)		20 mtr (Clamping inside Pump Hose)	35 mtr.
Flexible Hose 1 "	12 mtr.	16 mtr.	35 mtr.	63 mtr.
HDPE Pipe 63 mm Dia	45 mtr.	75 mtr.	190 mtr	310 mtr.

C19

Near B.O.T Bridge



4 x 6 sq,mm Ar. Cu. U.G Cable

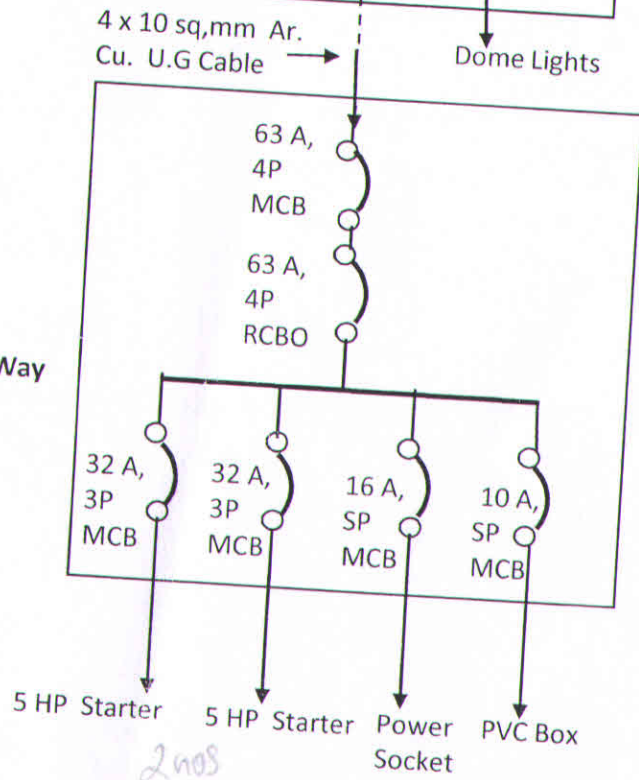
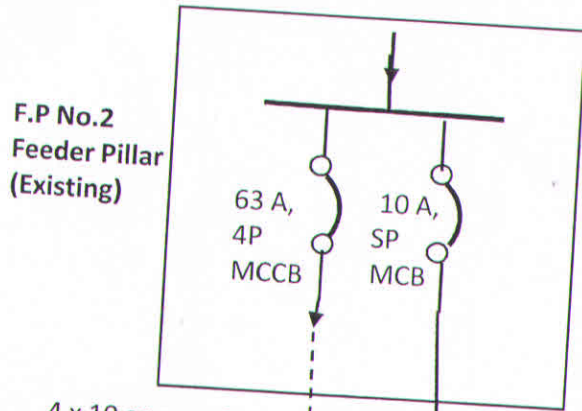
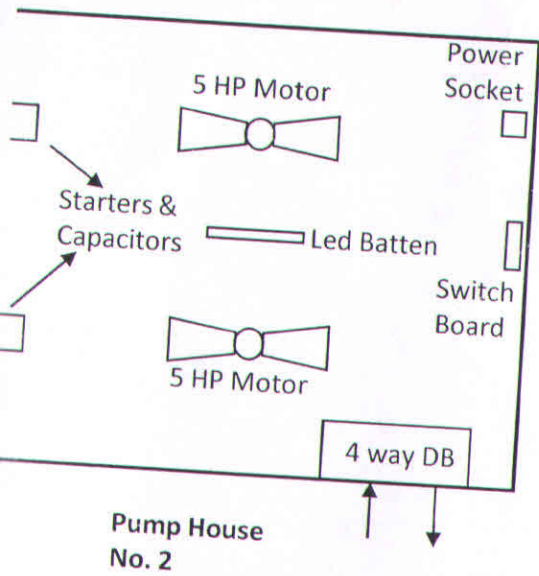


Item	Qty.
TPN 4 Way VDB	1 No.
63 A , 4 Pole MCCB	1 No.
63 A, 4 Pole MCB	1 No.
40 A, 4 Pole RCBO, 300 mA	1 No.
16 A, 3 Pole MCB	2 Nos.
16 A, SP MCB	1 No.
10 A, SP MCB	2 Nos.
DOL Starter, 3 Phase, 1 HP	2 Nos.
5 in 1 Switch & Socket , 16 A incl. Box & Plate	1 Set.
6 Module PVC Box with 1 no. 6A Socket & 4 nos. 6 A Switches incl. Plate	1 Set
LED Batten	1 No.

2011

C₂₀

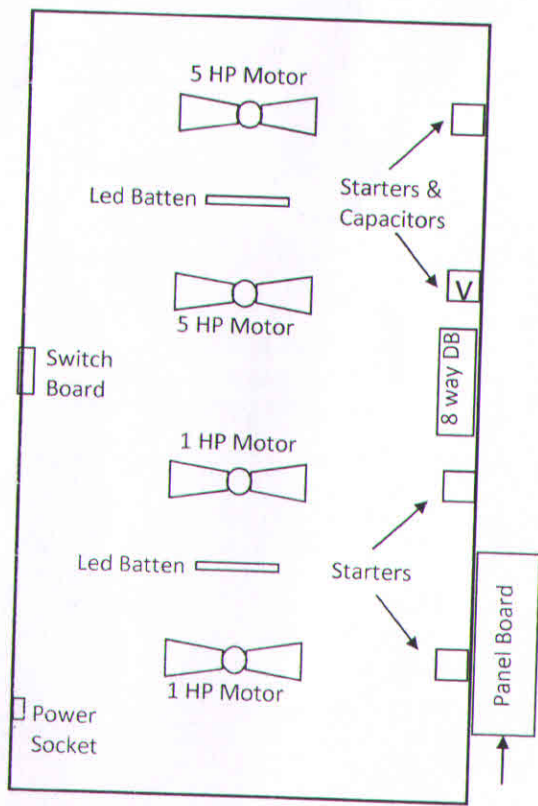
Near Pedestrian Bridge



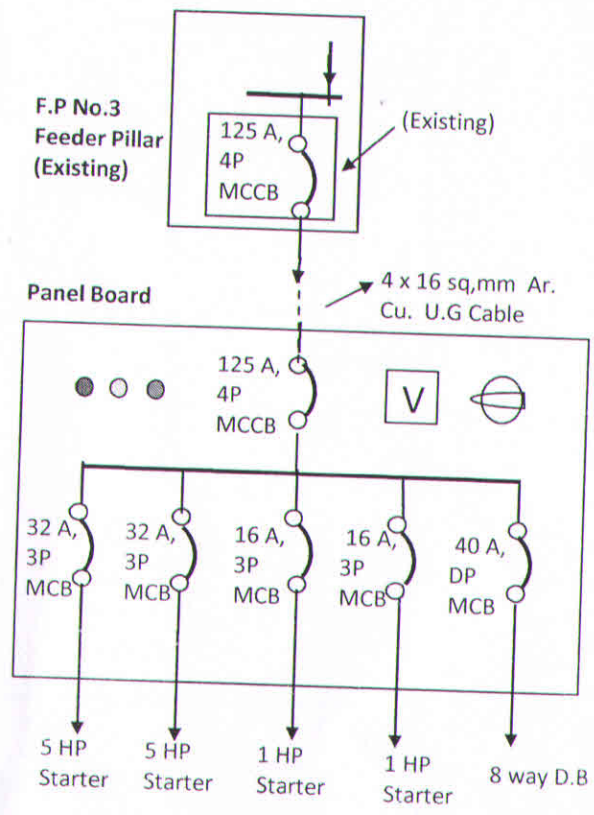
Item	Qty.
TPN 4 Way VDB	1 No.
63 A , 4 Pole MCCB	1 No.
63 A, 4 Pole MCB	1 No.
63 A, 4 Pole RCBO, 300 mA	1 No.
32 A, 3 Pole MCB	2 Nos.
16 A, SP MCB	1 No.
10 A, SP MCB	2 Nos.
DOL Starter, 3 Phase, 5 HP	2 Nos.
3 Phase Heavy Duty Capacitor, 2 KVAR	2 Nos.
5 in 1 Switch & Socket , 16 A inci. Box & Plate	1 Set.
6 Module PVC Box with 1 no. 6A Socket & 4 nos. 6 A Switches incl. Plate	1 Set
LED Batten	1 No.
Dome Lights	3 Nos.

C₂₁

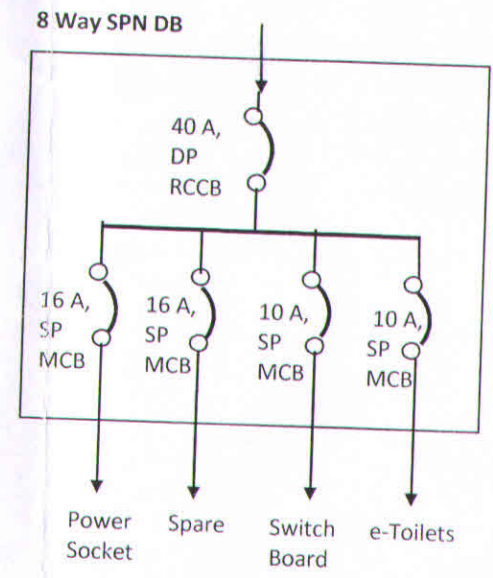
Near Kannanghat Bridge



Pump House No. 3



4 nos



Next.....

Walk way Electrical Works: Location Sketch & Cable Details

