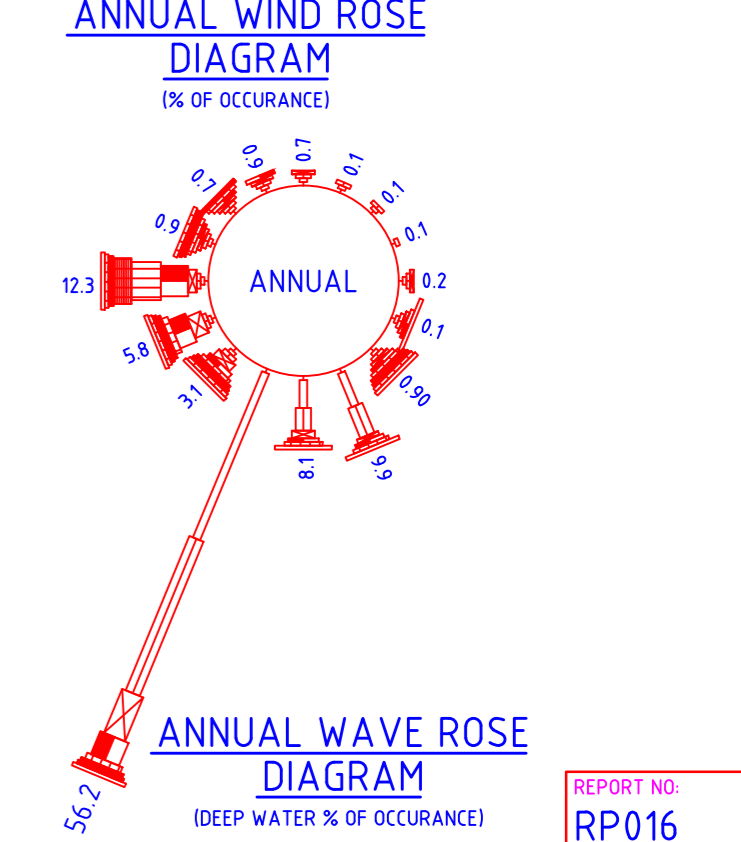
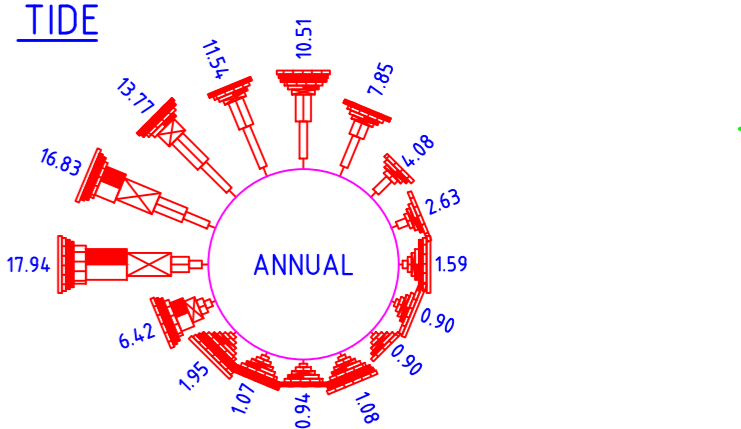
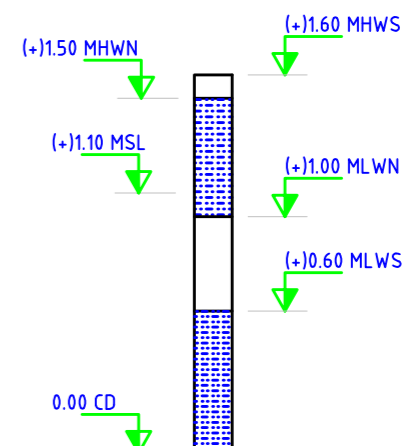


KEY PLAN
SCALE: 1:120000

LEGEND

	BCL	BERTH CORNER LIGHT
--	-----	--------------------

SL.NO	DESCRIPTION	AREA m ²
1	PASSENGER WAITING HALL	1480
2	PARKING AREA	339
3	GREEN BELT	1017
4	SECURITY CABIN	80
5	WAREHOUSE	250



NOTES:
 1. ALL DIMENSIONS ARE IN METRES.
 2. ALL LEVELS ARE IN METRES AND ARE WITH RESPECT TO CHART DATUM (CD).
 ALL COORDINATES ARE GIVEN IN METRES REFERRED TO UNIVERSAL TRANSVERSE MERCATOR (UTM) PROJECTION, SPHEROID (WGS 1984), ZONE 43.

DRAWING NO.	TITLE	REV.	DDMMYY DATE	STATUS	DESCRIPTION	DES.	DRN.	INIT. CHECKED	SIGN. APPROVED
		C	11 12 23	4	FIRST SUBMISSION	ASA	AST	ASA	PRJ
REVISIONS									
STATUS CODES 1: PRELIMINARY 2: FOR APPROVAL 3: GOOD FOR CONSTRUCTION 4: FOR REPORT									

CLIENT: COCHIN PORT AUTHORITY

PROJECT: PORT LED DEVELOPMENT WORKS AND ALLIED FACILITIES, LAKSHADWEEP

TITLE: KADMAT: EASTERN JETTY DEVELOPMENT PLAN

REPORT NO: RP016

PROJECT NO: C1221104

COP: -

SCALE: 1:9000

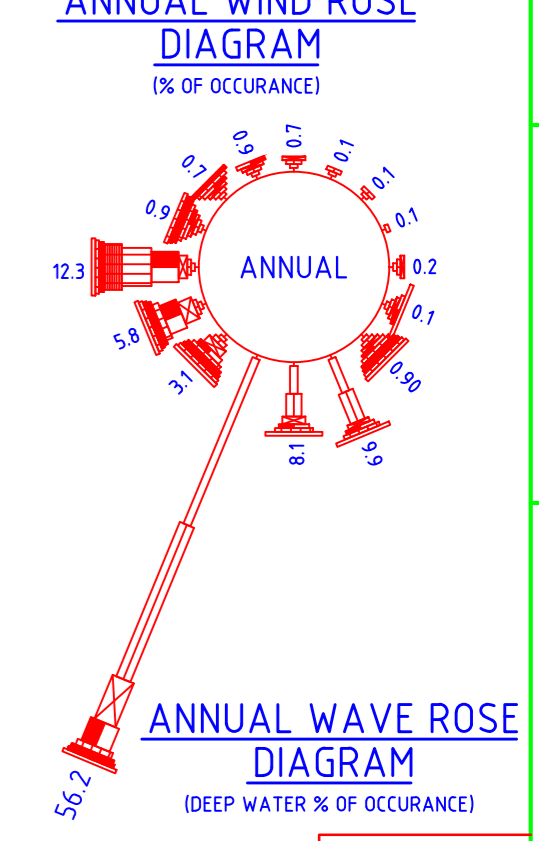
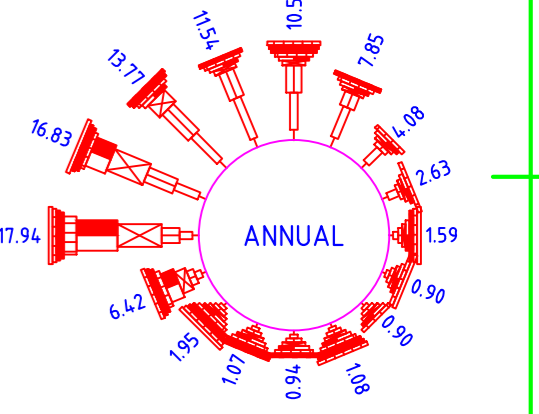
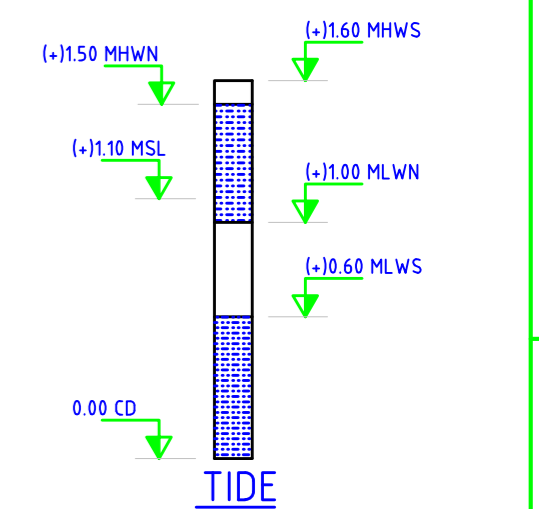
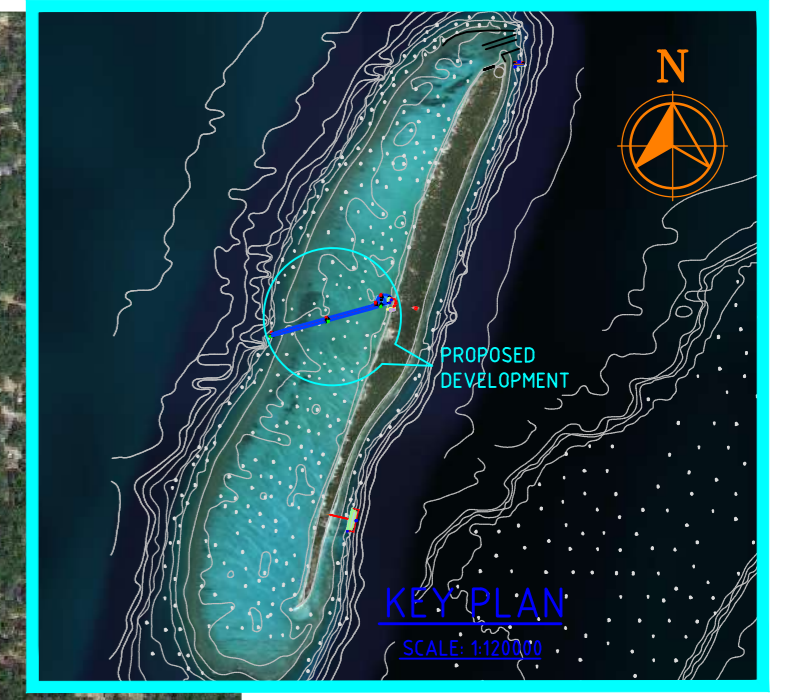
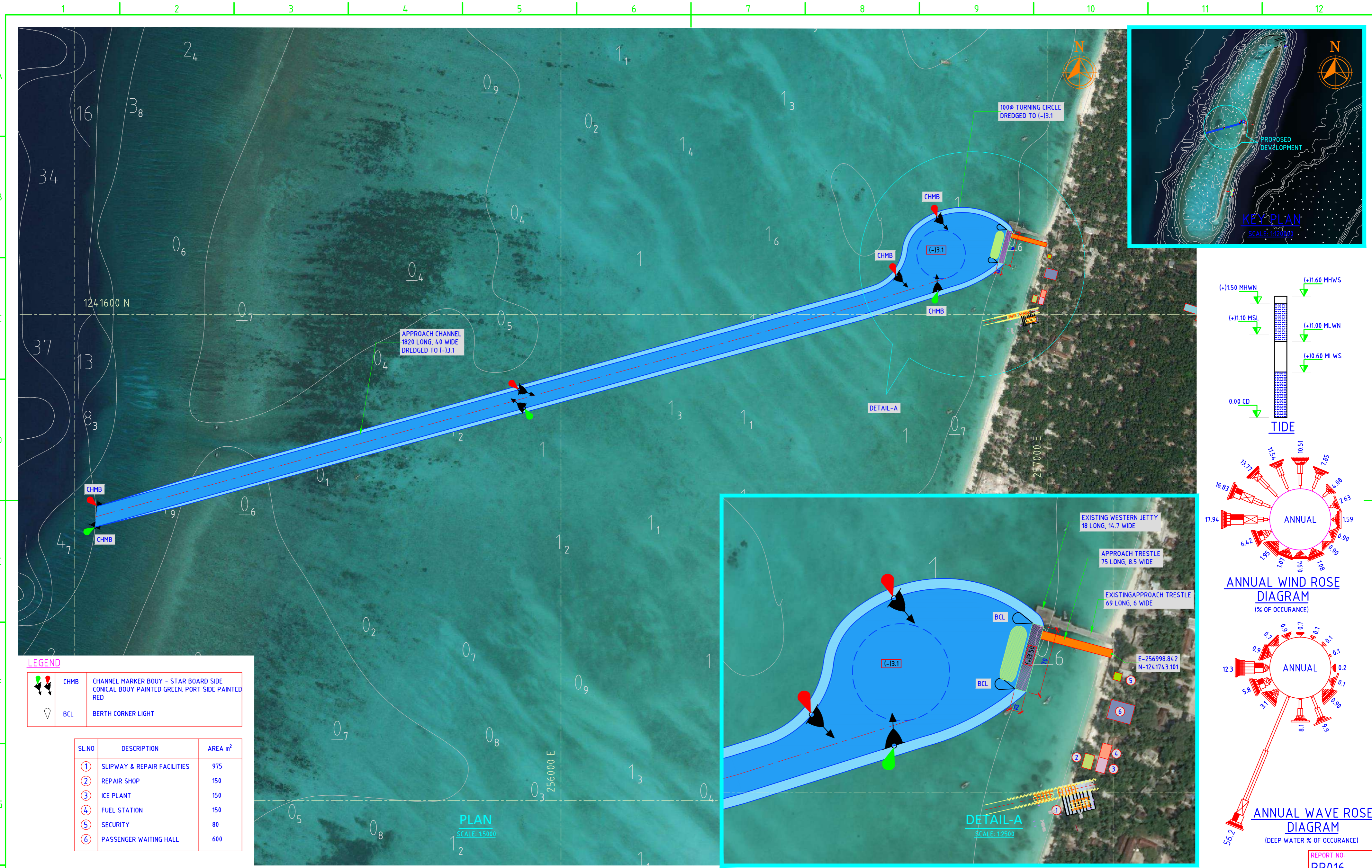
DRAWING NO: FD0801

REV: C

L&T Infra Engineering

L&T Infrastructure Engineering Ltd.

AUTO PATH: L:\PORTS\2022\1221104 - RP - DPL OF JETTIES - L&T\WORKING DRAWINGS\DRP_RP016_RC_KADMAT_FINAL\DRP016_RC_KADMAT_EASTERN JETTY DEVELOPMENT PLANDWG



LEGEND

	CHMB	CHANNEL MARKER BOUY - STAR BOARD SIDE CONICAL BOUY PAINTED GREEN, PORT SIDE PAINTED RED
	BCL	BERTH CORNER LIGHT

SL.NO	DESCRIPTION	AREA m ²
1	SLIPWAY & REPAIR FACILITIES	975
2	REPAIR SHOP	150
3	ICE PLANT	150
4	FUEL STATION	150
5	SECURITY	80
6	PASSENGER WAITING HALL	600

NOTES:
 1. ALL DIMENSIONS ARE IN METRES.
 2. ALL LEVELS ARE IN METRES AND ARE WITH RESPECT TO CHART DATUM (CD).
 3. ALL COORDINATES ARE GIVEN IN METRES REFERRED TO UNIVERSAL TRANSVERSE MERCATOR (UTM) PROJECTION, SPHEROID (WGS 1984), ZONE 43.

REV.	DDMMYY DATE	STATUS	DESCRIPTION	DES.	DRN.	INIT. CHECKED	SIGN. APPROVED
C	11 12 23	4	FIRST SUBMISSION	ASA	AST	ASA	PRJ

REVISIONS

DRAWING NO.	TITLE	STATUS CODES
	REFERENCE DRAWINGS	1- PRELIMINARY 2- FOR APPROVAL 3- GOOD FOR CONSTRUCTION 4- FOR REPORT

CLIENT: COCHIN PORT AUTHORITY

PROJECT: PORT LED DEVELOPMENT WORKS AND ALLIED FACILITIES, LAKSHADWEEP

TITLE: KADMAT: WESTERN JETTY DEVELOPMENT PLAN (Sheet 1 of 2)

PROJECT NO.: C1221104

COP.: -

SCALE: AS SHOWN

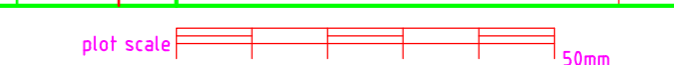
DRAWING NO.: FD0802

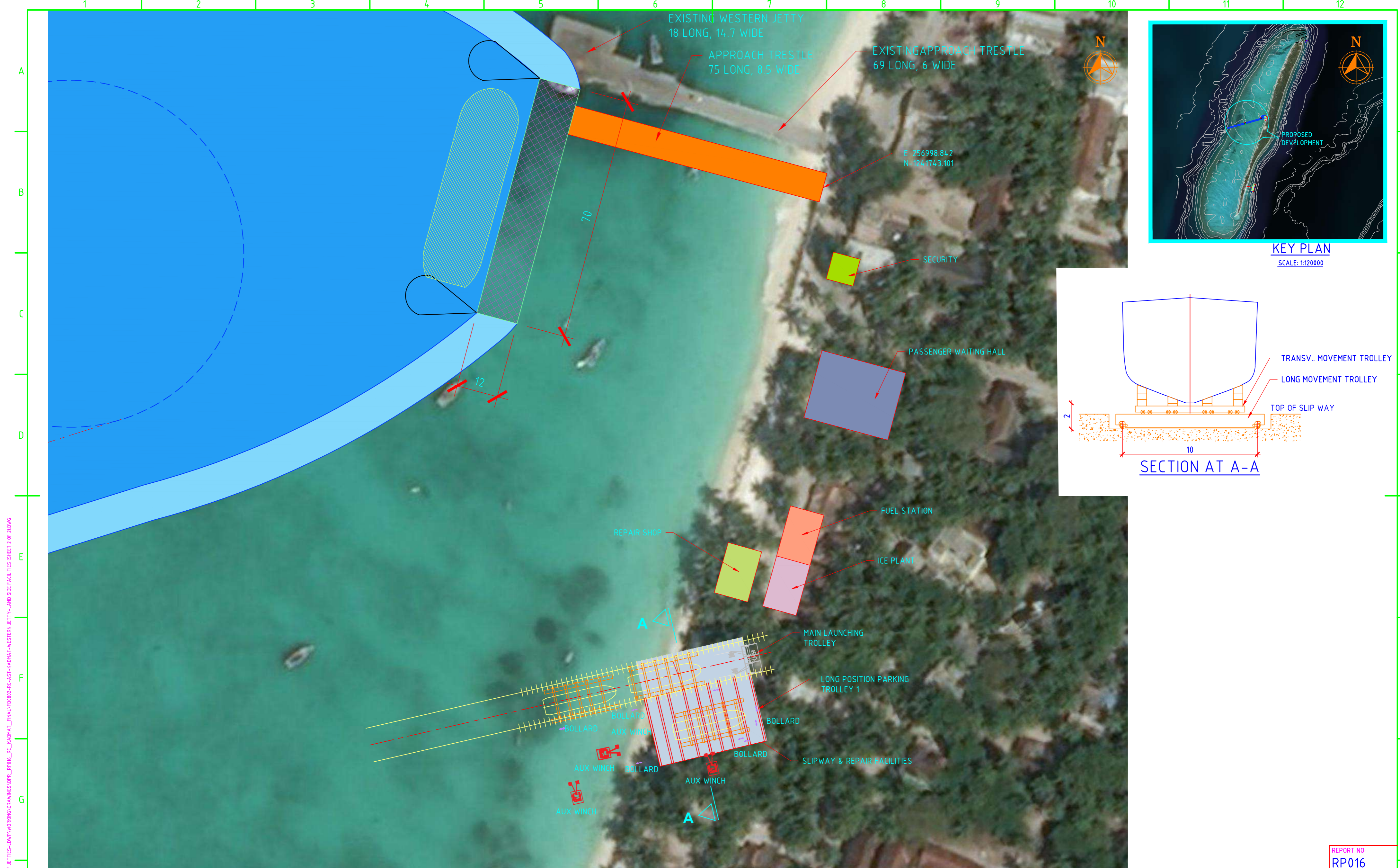
REV.: C

L&T Infra Engineering

AUTO PATH: L:\PROJECTS\1221104 - KP - DUBL OF JETTIES-LDP\WORKING DRAWINGS\DRW_RP016_RC_KADMAT-WESTERN JETTY-DEVELOPMENT PLAN (SHEET 1 OF 2).DWG

PLANNING, DESIGN, ENGINEERING, CONSTRUCTION, MAINTENANCE AND OPERATIONS OF PORTS AND WATERWAYS. L&T INFRA ENGINEERING LTD. IS AN ISO 9001:2015 CERTIFIED COMPANY. ALL RIGHTS RESERVED. NO PART OF THIS DOCUMENT MAY BE REPRODUCED OR TRANSMITTED IN ANY FORM OR BY ANY MEANS, ELECTRONIC OR MECHANICAL, WITHOUT PERMISSION IN WRITING FROM L&T INFRA ENGINEERING LTD.





AUTO PATH: L:\PORTS\2022\1221104 - RP - D\PL OF JETTIES-LDWP\WORKING DRAWINGS\DRP_RP016_RC_KADMAT_FINAL\DD802-RC-AST-KADMAT-WESTERN JETTY-LAND SIDE FACILITIES (SHEET 2 OF 2)DWG

NOTES

- ALL DIMENSIONS ARE IN METRES.
- ALL LEVELS ARE IN METRES AND ARE WITH RESPECT TO CHART DATUM (CD).
- ALL COORDINATES ARE GIVEN IN METRES REFERRED TO UNIVERSAL TRANSVERSE MERCATOR (UTM) PROJECTION, SPHEROID (WGS 1984), ZONE 43.

DRAWING NO.	TITLE	REV.	DDMMYY DATE	STATUS	DESCRIPTION	DES.	DRN.	INIT. CHECKED	SIGN. APPROVED
		C	11 12 23	4	FIRST SUBMISSION	ASA	AST	ASA	PRJ
REVISIONS									
STATUS CODES 1 - PRELIMINARY 2 - FOR APPROVAL 3 - GOOD FOR CONSTRUCTION 4 - FOR REPORT									

PATH: REFER BOTTOM
 ORIG. SIZE: A2
 LEFT CORNER OF THE DRAWING

CLIENT: COCHIN PORT AUTHORITY		REPORT NO: RP016
PROJECT: PORT LED DEVELOPMENT WORKS AND ALLIED FACILITIES, LAKSHADWEEP	PROJECT NO: C1221104	
TITLE: KADMAT: WESTERN JETTY LAND SIDE FACILITIES	COP: -	
(Sheet 2 of 2)		SCALE: AS SHOWN
L&T Infra Engineering L&T Infrastructure Engineering Ltd.		DRAWING NO: FD0802
		REV: C

plot scale 50m