

LEGEND

BCL BERTH CORNER LIGHT

SL.NO	DESCRIPTION	AREA m ²
1	PASSENGER WAITING HALL	1480
2	PARKING AREA	339
3	GREEN BELT	1017
4	SECURITY CABIN	80
5	WAREHOUSE	250

REPORT NO:
RP007

NOTES:
 1. ALL DIMENSIONS ARE IN METRES.
 2. ALL LEVELS ARE IN METRES AND ARE WITH RESPECT TO CHART DATUM (CD).
 ALL COORDINATES ARE GIVEN IN METRES REFERRED TO UNIVERSAL TRANSVERSE MERCATOR (UTM) PROJECTION, SPHEROID (WGS 1984), ZONE 43.

REV.	DDMMYY DATE	STATUS	DESCRIPTION	DES.	DRN.	INIT. CHECKED	SIGN. APPROVED	INIT.	SIGN.
E	12 12 23	4	FIRST SUBMISSION	ASA	AST	ASA	PRJ		

REVISIONS

STATUS CODES 1- PRELIMINARY 2- FOR APPROVAL 3- GOOD FOR CONSTRUCTION 4- FOR REPORT

DRAWING NO.	TITLE
	REFERENCE DRAWINGS

CLIENT: COCHIN PORT AUTHORITY

PROJECT: PORT LED DEVELOPMENT WORKS AND ALLIED FACILITIES, LAKSHADWEEP

TITLE: KALPENI: EASTERN JETTY DEVELOPMENT PLAN

PROJECT NO: C1221104

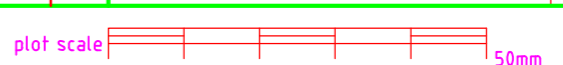
COP: -

SCALE: 1:3000

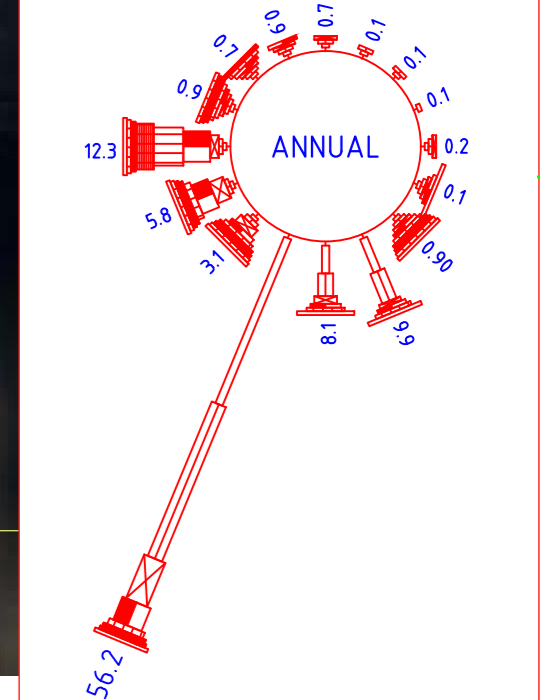
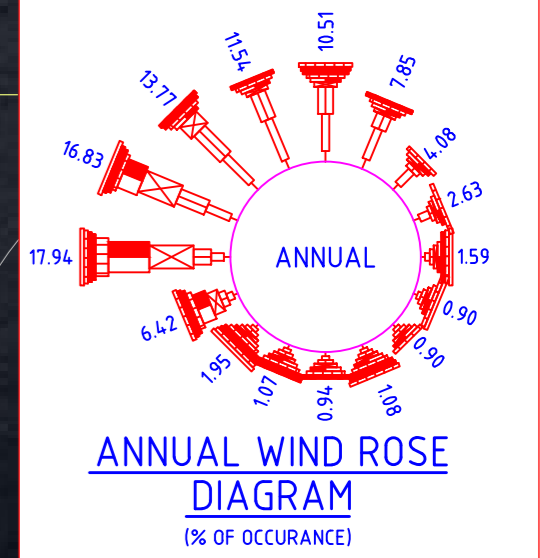
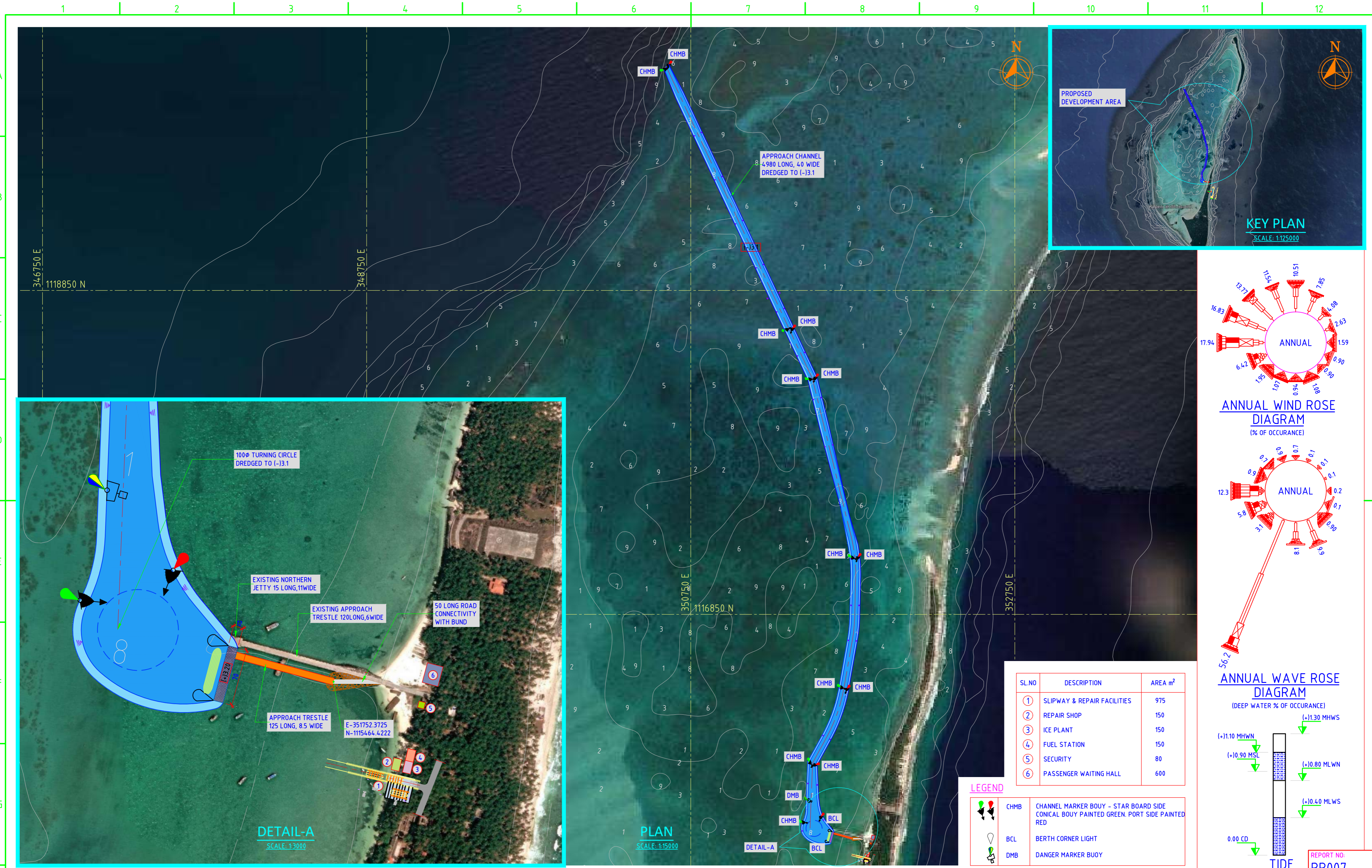
DRAWING NO: FD0801

REV: E

L&T Infra Engineering L&T Infrastructure Engineering Ltd.



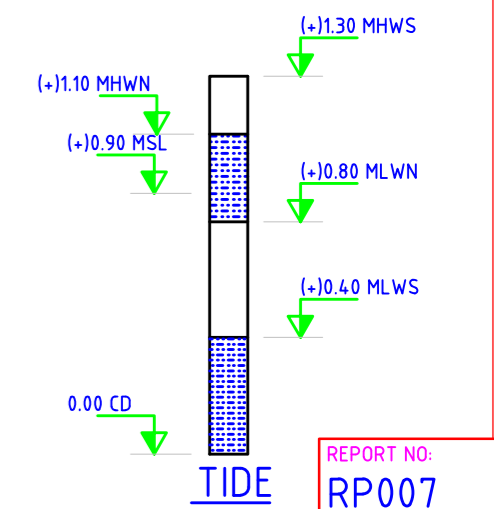
AUTO PATH: L:\PORTS\2023\12\1104 - RP - DWG OF JETTIES - LDWP\WORKING DRAWINGS\DRW_RP007 - RP - KALPENI_FINAL\VD0801-RE-AST-KALPENI-EASTERN JETTY-DEVELOPMENT PLANNING



SL.NO	DESCRIPTION	AREA m ²
1	SLIPWAY & REPAIR FACILITIES	975
2	REPAIR SHOP	150
3	ICE PLANT	150
4	FUEL STATION	150
5	SECURITY	80
6	PASSENGER WAITING HALL	600

LEGEND

- CHMB CHANNEL MARKER BUOY - STAR BOARD SIDE CONICAL BUOY PAINTED GREEN, PORT SIDE PAINTED RED
- BCL BERTH CORNER LIGHT
- DMB DANGER MARKER BUOY



NOTES:
 1. ALL DIMENSIONS ARE IN METRES.
 2. ALL LEVELS ARE IN METRES AND ARE WITH RESPECT TO CHART DATUM (CD).
 ALL COORDINATES ARE GIVEN IN METRES REFERRED TO UNIVERSAL TRANSVERSE MERCATOR (UTM) PROJECTION, SPHEROID (WGS 1984), ZONE 43.

REV.	DDMMYY DATE	STATUS	DESCRIPTION	DES.	DRN.	INIT. CHECKED	SIGN. APPROVED
E	12 12 23	4	FIRST SUBMISSION	ASA	AST	ASA	PRJ

REVISIONS

STATUS CODES 1- PRELIMINARY 2- FOR APPROVAL 3- GOOD FOR CONSTRUCTION 4- FOR REPORT

DRAWING NO.	TITLE
	REFERENCE DRAWINGS

CLIENT: COCHIN PORT AUTHORITY

PROJECT: PORT LED DEVELOPMENT WORKS AND ALLIED FACILITIES, LAKSHADWEEP

TITLE: KALPENI: WESTERN JETTY DEVELOPMENT PLAN (Sheet 1 of 2)

PROJECT NO.: C1221104

COP.: -

SCALE: AS SHOWN

DRAWING NO.: FD0802

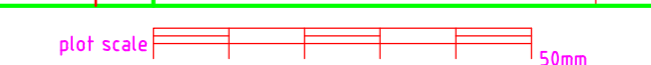
REV.: E

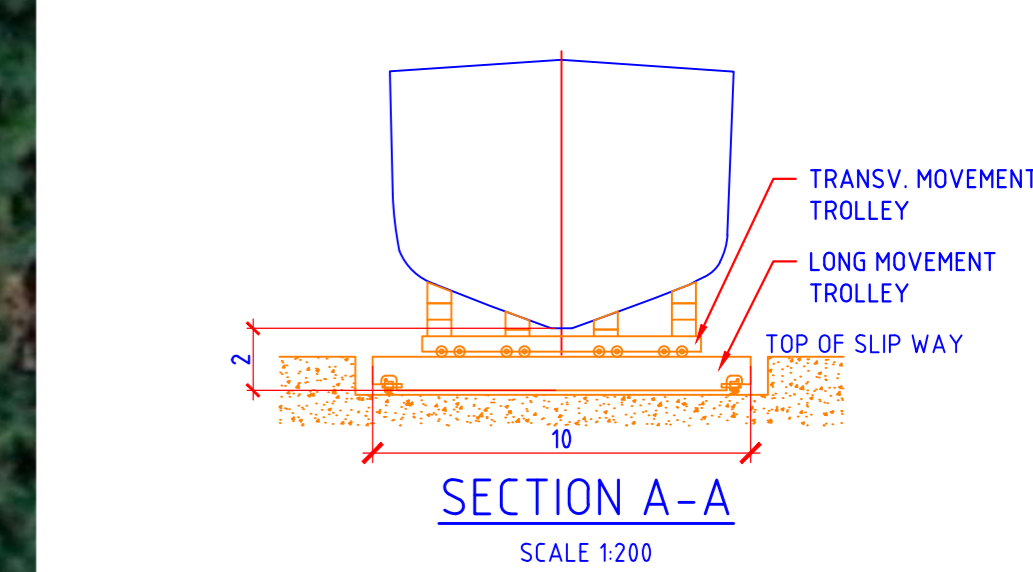
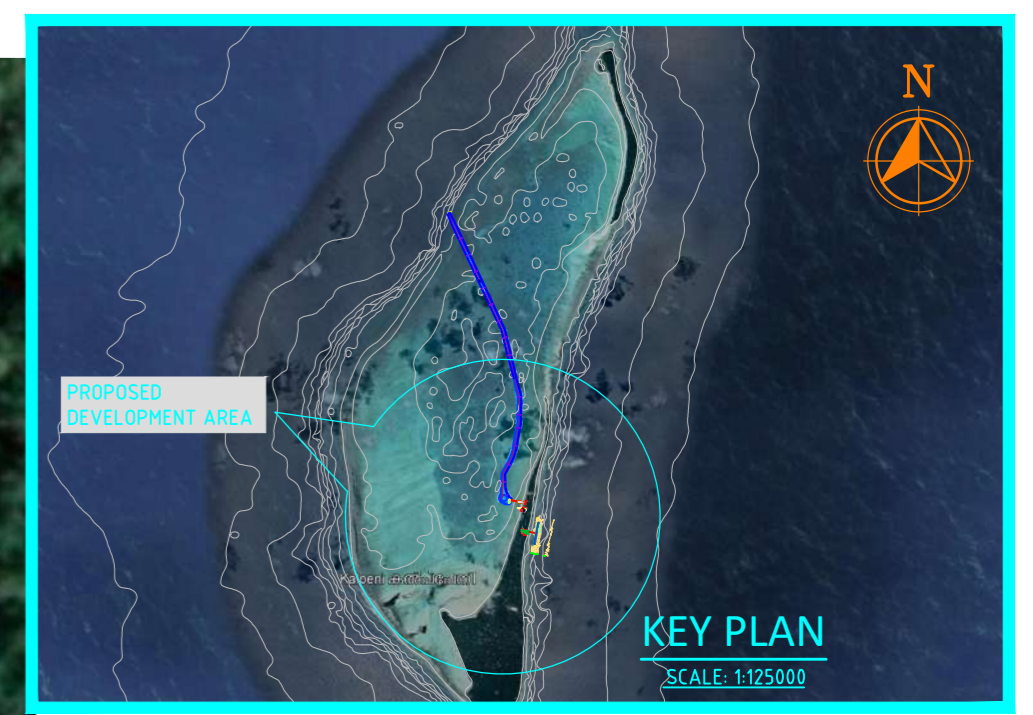
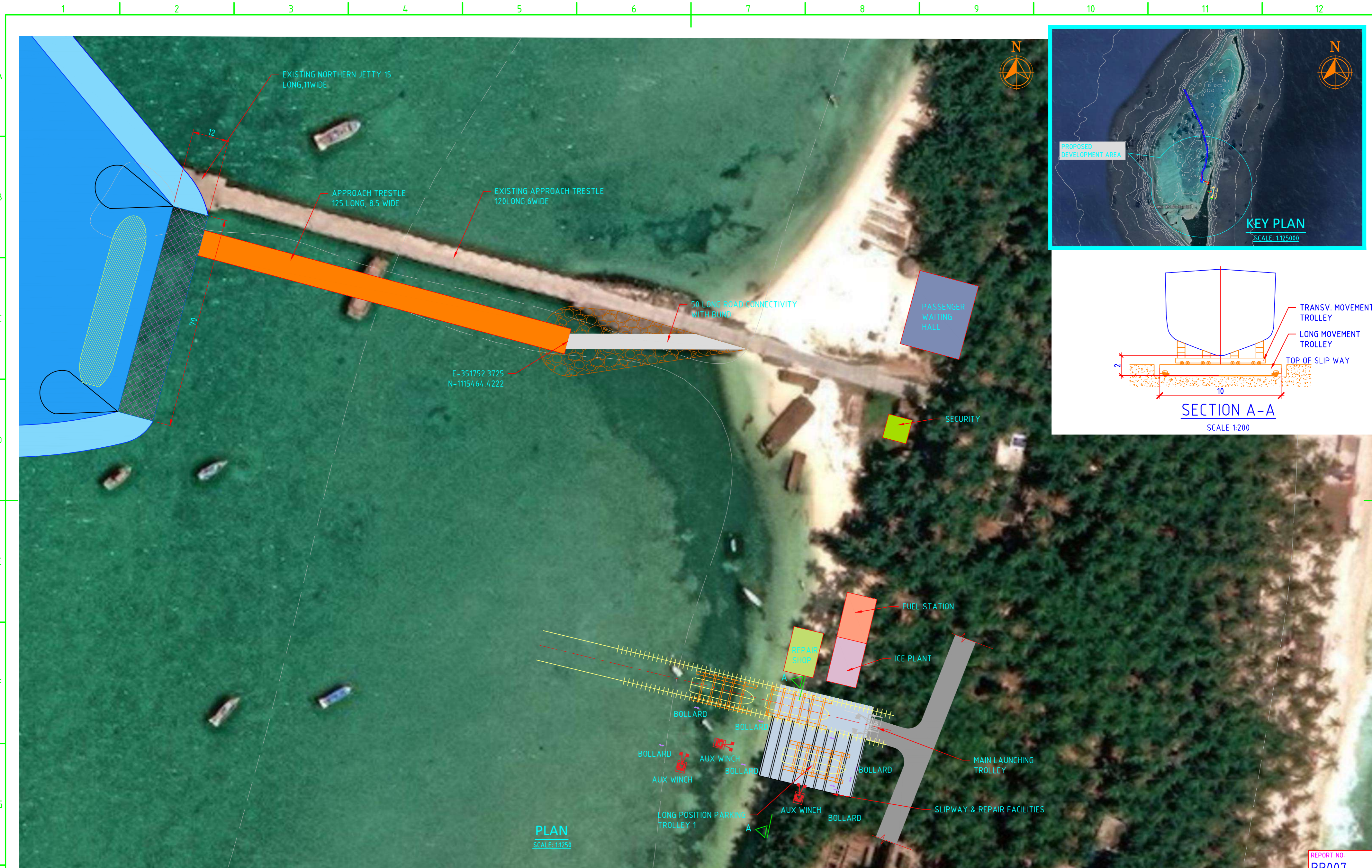
REPORT NO.: RP007

L&T Infra Engineering

L&T Infrastructure Engineering Ltd.

AUTO PATH: L:\PORTS\2023\12\21\104 - KP - DUBL OF JETTIES - L&T - WORKING DRAWINGS\DRW - RP007 - BE - KALPENI_FINAL\VD0802-RE-AST-KALPENI-WESTERN JETTY-DEVELOPMENT PLAN (SHEET 1 OF 2).DWG





PLAN
SCALE: 1:1250

NOTES:
 1. ALL DIMENSIONS ARE IN METRES.
 2. ALL LEVELS ARE IN METRES AND ARE WITH RESPECT TO CHART DATUM (CD).
 ALL COORDINATES ARE GIVEN IN METRES REFERRED TO UNIVERSAL TRANSVERSE MERCATOR (UTM) PROJECTION, SPHEROID (WGS 1984), ZONE 43.

DRAWING NO.	TITLE	REV.	DDMMYY DATE	STATUS	DESCRIPTION	DES.	DRN.	INIT. CHECKED	SIGN. APPROVED
		E	12 12 23	4	FIRST SUBMISSION	ASA	AST	ASA	PRJ
REVISIONS									
STATUS CODES 1: PRELIMINARY 2: FOR APPROVAL 3: GOOD FOR CONSTRUCTION 4: FOR REPORT									
REFERENCE DRAWINGS									

CLIENT: COCHIN PORT AUTHORITY

PROJECT: PORT LED DEVELOPMENT WORKS AND ALLIED FACILITIES, LAKSHADWEEP

TITLE: KALPENI: WESTERN JETTY LAND SIDE FACILITIES (Sheet 2 of 2)

REPORT NO.: RP007

PROJECT NO.: C1221104

COP.: -

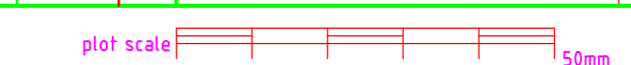
SCALE: AS SHOWN

DRAWING NO.: FD0802

REV.: E

L&T Infra Engineering

L&T Infrastructure Engineering Ltd.



AUTO PATH: L:\PORTS\2023\12\21\04 - RP - DWP OF JETTIES - DWP WORKING DRAWINGS\DRP - RP007 - BE - KALPENI_FINAL\VD0802-RE-AAA-KALPENI-WESTERN JETTY-LAND SIDE FACILITIES SHEET 2 OF 2.DWG